



# SIS8800 Series

## 2U Digital & Analog Dual-Mode Repeater



- Support PDT/DMR/MPT
- Full-module design
- Single power amplifier design
- Single carrier design
- Adopts duplexer module
- Solid structure, high integration
- Complete sealing and high-efficiency dissipation

### Unique structural design Full-module structure design

Adopts power module, PA Module and hot plugged in/out of the receiving and sending module for convenient maintenance; reserves duplexer slot, the customized duplexer module could be installed directly in the repeater.

### Supports various functions Adopt multiple advanced technologies

Supports dynamic frequency allocation technology;  
Supports digital trunking same frequency simulcast;  
Supports GPS satellite positioning technology;  
Supports radio administrative level technology;  
Supports multi-diversity reception technology;  
and roaming group call, authentication and encryption.

### Humanized appearance design

Adopts LED display, showing the real-time working status, Rx field intensity and RF power of the repeater.

### Smooth switching of four operation modes

Accomplish smooth switching of four operation modes through software: analog trunking, analog conventional, digital trunking, digital conventional.

### Supports various networking mode

Support single repeater operation mode to transmit the signal.  
Support multi-repeaters interconnection mode via IP connection.

### Advanced TDMA technology

TDMA technology: double channel quantity and user capacity under digital mode compared to analog mode.

### Single PA design and inner looping fans

Ensuring 24-hour successive working at 100% duty cycle;

### Reliable and durable quality

Rugged mechanism with fully aluminum alloy material, good shielding.

# SIS8800 Series Product Specifications

## General

Operating Frequency Range	136-174MHz; 350-400MHz; 400-470MHz	Channel Spacing	12.5kHz/25kHz
Multi-Access Method	TDMA	Duplex Spacing	5M~10MHz
Modulation	4FSK/FFSK/FM	Successive Data Speed (per carrier)	9.6kbps
Carrier Frequency Error	≤ 100Hz	Weight (Without Antenna)	8.1Kg
Storage Humidity	<80%	Operating Humidity	20% ~ 80%
Storage Temperature	-40℃ ~ 85℃	Operating Temperature	-30℃ ~ 60℃
Dimensions (HxWxD)	485X242X88(mm)		

## Receiver

Sensitivity (5%BER) (Digital)			
Stastic Sensitivity	-117dBm	Dynamic Sensitivity	-110dBm
Sensitivity(12dB SINAD) (Analog)	-117dBm		
Adjacent Channel Selectivity	-65dB@ 12.5KHz/-70dB@25KHz	Maximum Signal Rx Level	-7dBm
Co-channel Rejection	12dB	Blocking	84dB
Inter-modulation	70dB	Spurious Response Rejection	70dB
Conducted Spurious Emission	-57dBm		

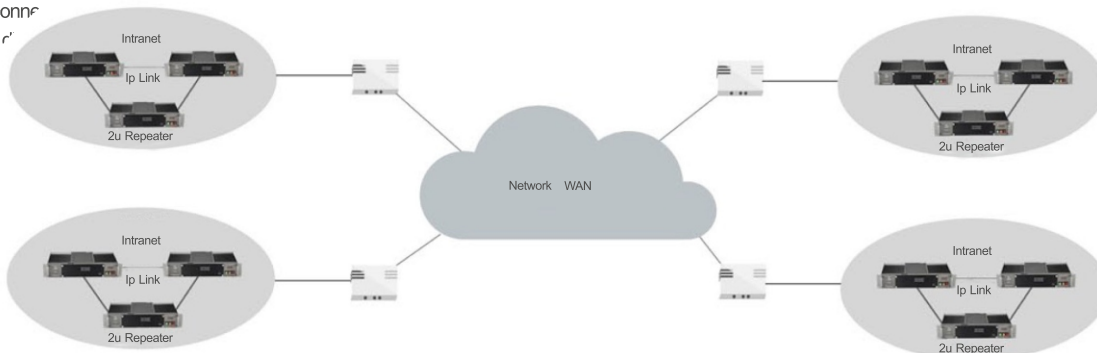
## Transmitter

Frequency Stability	±0.1ppm		
RF Output Power	5~100W		
Maximum Output Power Tolerance	±1.5dB(Typical)/+2/-3dB(extreme)		
Adjacent Channel Power	-65dB@ 12.5KHz/-70dB@25KHz		
Conducted/Radiated Interference (Antenna,transmit mode)	9kHz~1GHz≤ -36dBm 1GHz~12.75GHz≤ -30dBm		
Conducted/Radiated Interference (Antenna,standby mode)	30MHz~1GHz≤ -36dBm 1GHz~12.75GHz≤ -30dBm		
Inter-modulation Attenuation	≤ -60dB@ 12.5KHz ≤ -70dB@25KHz		
Transient Switch ACPR	±12.5kHz≤ -50dB ±25kHz≤ -60dB		

## Reference Solutions for Applications

Suitable for large range of distributed data and voice communications, through the IP link to realize the interconnect between multiplerepeaters of different regions, and achieve seamless coverage of the signal blind areas.

link to realize interconnect multiplerepeaters of to achieve seamless of the signal blind



Samhoo reserves the right to improve and change the product specifications, appearance and design, without prior notice. Accessories supply have different due to the market, please contact the local agents to any inquire. The pictures are only for reference, please refer to the actual products.